

Private Thomas Ingram Revell READE +

NX56483 - 2/18th Australian Infantry Battalion

OCCUPATION: Mechanic

ENLISTMENT DATE & PLACE: 5 July 1940, Paddington, Sydney

CONFLICT AREAS: Malaya

BIRTH DATE: 19 Mar 1904, London, UK.

PARENTS: Edward & Blanche Reade

NEXT OF KIN: Grace Reade, wife.

FATE: Prisoner of War. Executed 19 Feb 1942, Malaya.

CEMETERY: No known grave

MEMORIALS: Singapore Memorial, Kranji War Cemetery, Singapore.
National War Museum, Canberra; Cumnock War Memorial Gates.

BRIEF BIOGRAPHY

Thomas' father, Edward Rebell Reade, was a Major in the East Lancashire Regiment. In 1911 Edward and his wife Blanche, were living in Lincoln with two daughters, Enid and Elizabeth and 7 year old son, Thomas. Edward was then employed as the Governor of HM Prison, Lincoln.

Thomas stated on his enlistment form that he had been a Private with the 23rd London Armoured Car Company and Tanks Corps. Thomas, aged 18 years, immigrated to Australia on the *SS Ballarat* and arrived in Melbourne on 22 Aug 1922. He married Grace Margaret Russell at North Sydney in 1930. They had a son, RE Revell Reade, born 1932. The family had a voyage to England in December 1934, returning to Australia in March 1935.

In the 1937 Electoral Rolls North Sydney/Crows Nest, Thomas was working as a salesman and living with Grace at 48 Bay Road, Waverton.

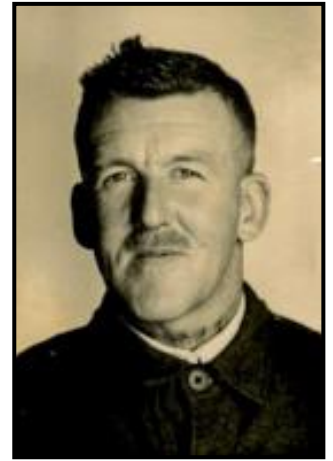
Thomas enlisted in WW2 on 18 Jun 1940 at Paddington, Sydney. His occupation was listed as a driver mechanic for the Amaroo shire Council, Cumnock. His wife Grace, residing in North Sydney, was his next of kin. He had blue eyes, fair hair and was of the Church of England religious denomination.

Pte Reade attended a Drivers and Mechanics Course from 13-25 Oct 1940 at Ingleburn. He embarked on *HMT QM* on 2 Feb 1941 at Sydney with the 2nd Echelon Malaya, Special Group 11, and disembarked at Singapore on 18 Feb 1941. He had leave in Singapore from 16- 20 July, and 30 Oct - 8 Nov, 1941.

"Immediately upon its arrival in Singapore on 18 February, the 2/18th moved north to Port Dickson in Malaya, where it would train for service under tropical conditions. In March it moved to Seremban in central Malaya, in late-August to Jemaluang on the east coast, and in early September to Mersing, also on the east coast. The 2/18th's first major action was at Nithsdale Estate in the early hours of 27 January. The battalion lay in wait for the advancing Japanese and sprang an ambush involving three of its companies. It took the Japanese completely by surprise and inflicted heavy casualties. But command broke down in the dark - the complex ambush plan had been intended for daylight - and a premature withdrawal order from brigade headquarters forced the abandonment of D Company behind the bulk of the Japanese force." www.awm.gov.au/collection/U56061

Pte Reade was reported missing in Malaya on 16 Feb 1942 and later reported as executed by the Japanese whilst of prisoner of war. It is not known what happened to Grace Reade after 1958, when she was listed on the Electoral Roll for Warringah/Mosman and working as a stenographer.

© Dianne Strahan & Val McKenzie, June 2023, www.cumnocknswmemorials.com



**Cumnock Memorial Gates
&
Singapore Memorial,
Kranji War Cemetery,
Singapore.**

